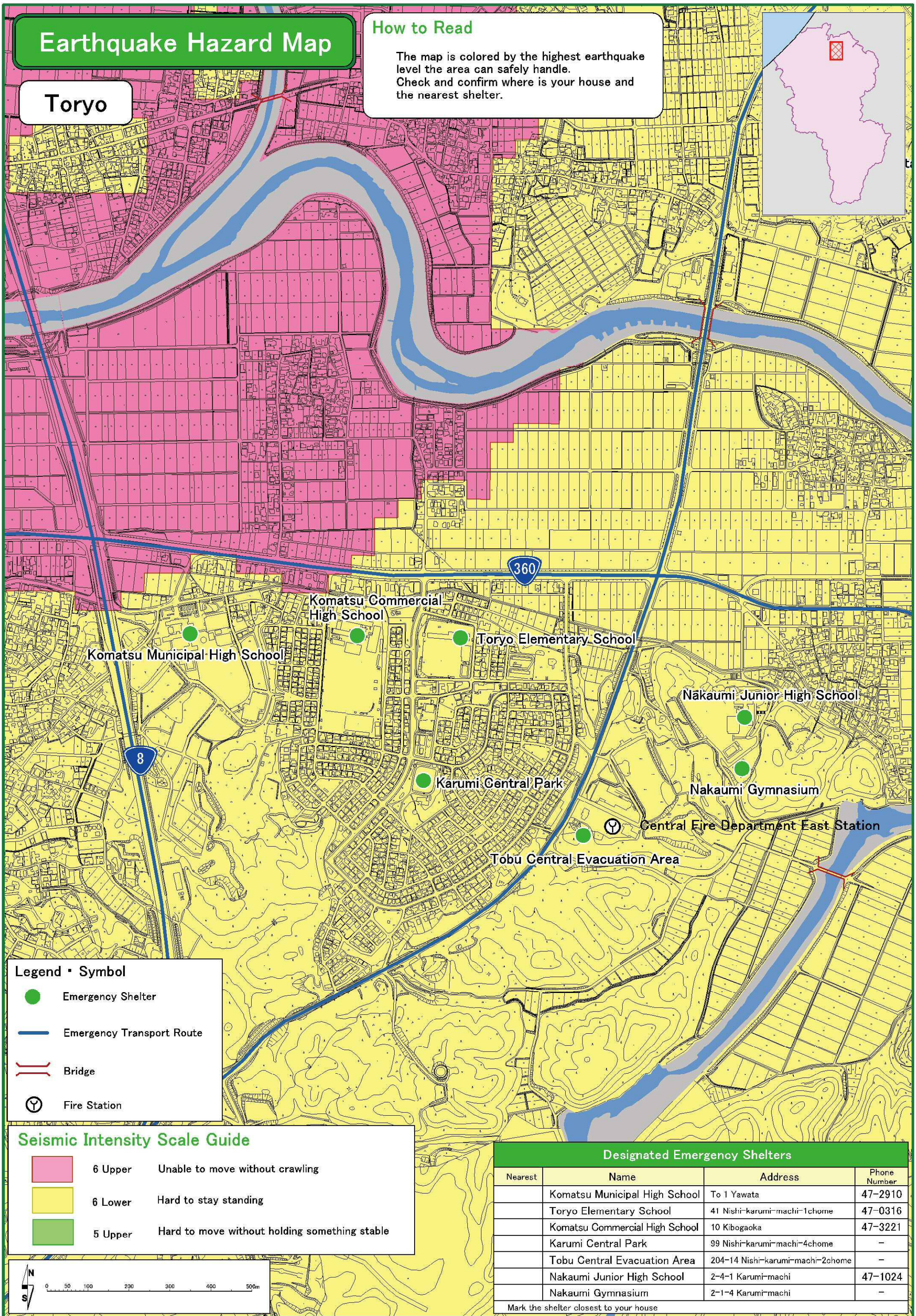
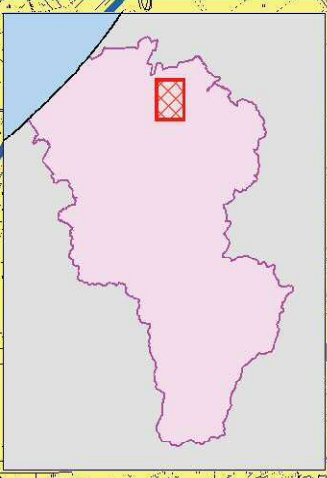


Earthquake Hazard Map

Toryo

How to Read

The map is colored by the highest earthquake level the area can safely handle. Check and confirm where is your house and the nearest shelter.



Legend • Symbol

- Emergency Shelter
- Emergency Transport Route
- Bridge
- ⦿ Fire Station

Seismic Intensity Scale Guide

- | | |
|---------|---|
| 6 Upper | Unable to move without crawling |
| 6 Lower | Hard to stay standing |
| 5 Upper | Hard to move without holding something stable |

Designated Emergency Shelters

Nearest	Name	Address	Phone Number
	Komatsu Municipal High School	To 1 Yawata	47-2910
	Toryo Elementary School	41 Nishi-karumi-machi-1chome	47-0316
	Komatsu Commercial High School	10 Kibogaoka	47-3221
	Karumi Central Park	99 Nishi-karumi-machi-4chome	—
	Tobu Central Evacuation Area	204-14 Nishi-karumi-machi-2chome	—
	Nakaumi Junior High School	2-4-1 Karumi-machi	47-1024
	Nakaumi Gymnasium	2-1-4 Karumi-machi	—

Mark the shelter closest to your house