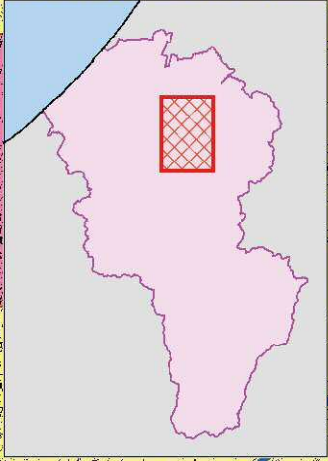


Earthquake Hazard Map

Kaneno



How to Read

The map is colored by the highest earthquake level the area can safely handle. Check and confirm where is your house and the nearest shelter.

Seismic Intensity Scale Guide

- 6 Upper Unable to move without crawling
- 6 Lower Hard to stay standing
- 5 Upper Hard to move without holding something stable

Legend - Symbol

- Emergency Shelter
- Emergency Transport Route
- Bridge

| Designated Emergency Shelters | | | |
|-------------------------------|--|-----------------------|--------------|
| Nearest | Name | Address | Phone Number |
| | Former Kaneno Elementary School | Ne 43 Ono-machi | - |
| | Shoto Junior High School | Hei 30 Esashi-machi | 41-1070 |
| | Komatsu Special Needs Education School | Tei 76 Kanahira-machi | 41-1215 |
| | Fureai Shoto Community Center | 49 Nagatani-machi | 46-1433 |

Mark the shelter closest to your house

